

Jasper Arts Center, 951 College Avenue, Jasper, IN 47546
(812) 482-3070
Doreen Lechner, Facility Manager (dlechner@jasperindiana.gov)

TECHNICAL INFORMATION SHEET: GENERAL

STAGE DIMENSIONS:

Depth: Plaster line to cyc, 30 ft.; Plaster line to back wall, 39 ft.;
Front edge of stage to Grand Traveler, 5-1/2 ft.

Width: Proscenium width, 40 ft.; Wall to wall 82 ft.;

Wing space: stage left, 15' (obstructed); stage right, 15'
(curtains extend into wings)

Height: DEAD HUNG HOUSE W/ 16' AVERAGE TRIM HEIGHT
Stage floor to I-beams, 25 ft.; Proscenium height: 18 ft.

STAGE ACCESS:

Loading Dock (truck height): w/ dock plate at stage level, 8'x12', internal loading door 7'6" x 11'6"
External Sidewalk: connects stage level to FOH level and Dance Studio level

HEADSET SYSTEM:

Clear Com, 7 stations--SL, SR, Technical Balcony, House Center
Paging available into Dressing Rooms & Green Room through sound system

DISCONNECTS:

1- 400 Amp/ 3 Phase Stage power (located upstage right) - in-house lighting system also connected
to this power source

1- 200 Amp/ 3 Phase Stage power (located upstage right)

1- 100 Amp/ 3 Phase Stage power (located upstage right)

100 & 200 with camlock connectors

DRESSING ROOMS: (1/2 LEVEL ABOVE STAGE)

Men's: 5 person, lighted mirrors, running water, restroom facilities & shower

Women's: 6 person, lighted mirrors, running water, restroom facilities & shower (can accommodate
an additional 6 persons with mirrors but no lights)

SUPPORT SPACE:

Green Room: next to dressing rooms, includes workspace and lounge area

Production Office: can be set up in Green Room

Dance Studio: 1/2 level below stage (54'x27') with restrooms, full length mirrors, 2 moveable
dance barres are also available

Jasper Arts Center, 951 College Avenue, Jasper, IN 47546
(812) 482-3070
Doreen Lechner, Facility Manager (dlechner@jasperindiana.gov)

TECHNICAL INFORMATION SHEET: LIGHTING

ELECTRICS: Maximum trim height 20'

- House Beam: 32 circuits (usually use 26± instrumentation)
- 1st Electric: 24 circuits (flyable to hang); 4i from plaster line
- 2nd Electric: 24 circuits (flyable to hang); 11i from plaster line
- 3rd Electric: 24 circuits (flyable to hang); double pipe, 18i & 19i from plaster line
- 4th Electric (cyc lighting): 4-color border lights; 25i from plaster line
- Stage pockets - located in 2nd and 3rd wings, 4 circuits in each pocket for a total of 16 circuits; usually need to 2-fer

DIMMING SYSTEM:

- ETC Element or ETC Express 48/96
- ETC Sensor dimmer rack, 132 stage dimmers (dimmer per circuit) & 5 house dimmers (controlled w/ stage lighting)

INSTRUMENT INVENTORY:

ETC:

- 24 26± ETC Source 4 Juniors (use 1m templates)
- 16 36± ETC Source 4 Juniors (use "m" templates)
- 5 25±/50± ETC Source 4 Junior Zooms (use "m" templates)
- 10 Source 4s - 19±, 26±, 36± lenses
- 24 Source 4 PARs

Century:

- 8 6x16, 750 watt ellipses w/ gobo slot
- 21 6x12, 750 watt ellipses w/ gobo slot
- 12 6x9, 750 watt ellipses w/ gobo slot
- 40 6i, 500 watt fresnels (9 Strand-Century)

Altman:

- 12 6x12, 1000 watt Altman axial ellipses w/ gobo slot
- 4 6x12, 750 watt Altman ellipses w/ adjustable iris
- 10 6i, 1000 watt fresnels
- 6 ea. PAR 64s, narrow, medium, & wide focus

Other:

- 6 40± Colortran 575 watt ellipses w/ gobo slot
- 6 30± Colortran 575 watt ellipses w/ gobo slot
- 2 Lycian SuperArc 400 followspots (400W HTI lamp)
- 2 Lycian Midget 2K followspots (2000W BWA lamp)

Jasper Arts Center, 951 College Avenue, Jasper, IN 47546
(812) 482-3070
Doreen Lechner, Facility Manager (dlechner@jasperindiana.gov)

TECHNICAL INFORMATION SHEET: SOUND SYSTEM

MIXER

Soundcraft GB8, 32 channel, 8-bus console, located in technical balcony at rear of house
32 Channel Snake from stage to balcony

SPEAKERS

3 EAW MK-5366 15i speakers (L, C, R) - FOH
3 EAW MK-2366 12i speakers (L, C, R) - mid auditorium on delay
4 Celestion SR2 1000's in orchestra pit
4 Carvin 752 monitors (112HS)
2 Yamaha A15 speakers
2 Grund Audio Design monitors (ST-122M)
2 ElectroVoice ZLX-12P powered speakers

MICROPHONES

7 Shure SM-58s
5 Shure SM-57s
4 Shure SM-81s
8 Audix f15s
3 Samson S11s
1 Audio Technica ATW-R10 Wireless Lavalier
1 Shure AXS58D-V Handheld Wireless, Freq. 169.445
1 Shure AXS58D-CA Handheld Wireless, Freq. 176.200
4 Shure Presenter Series Wireless Lavalieres, Freq. 598.625, 603.900, 615.900, 623.350
1 JTS NX2 drum mic
1 JTS NX7 drum mic
3 JTS NX6 drum mics
1 Samson IR-3/SM58 Handheld Wireless
3 Audio Technica AT871 Boundary (170± & 100± elements)
1 Crate with on/off switch

EQUIPMENT

5-Disk CD Changer
Lexicon MX 200 Effects Processor

BACKSTAGE/PORTABLE SYSTEM FOR SCHOOLS

Yamaha EMX5014C powered mixer (10 channels, 14 inputs, 2 powered outputs)
Gear One PA2400 powered mixer (8 channels, 2 powered outputs)
Crate PX-600DP powered mixer (6 mic channels, 2 powered outputs)
Yamaha A15 speakers
Grund Audio Design monitors used for Mains
Carvin 752 Monitors

Jasper Arts Center, 951 College Avenue, Jasper, IN 47546
(812) 482-3070
Doreen Lechner, Facility Manager (dlechner@ci.jasper.in.us)

TECHNICAL INFORMATION SHEET: LOCAL SERVICES

Motels - in order of proximity to Jasper Arts Center

- | | |
|--|--|
| (1) Hampton Inn
335 3rd Ave.
Jasper, IN 47546
812/481-1811 | (4) Super 8
75 Indiana (off Hwy 231 S)
Jasper, IN 47546
812/481-2008 |
| (2) Days Inn
272 Brucke Strasse
(Junction of 3rd Ave. & Hwy 164)
Jasper, IN 47546
812/482-6000 | (5) Holiday Inn Express
2000 Hospitality Drive
(off Hwy 231 S)
Jasper, IN 47546
812/482-3344 |
| (3) Fairfield Inn & Suites
333 River, W Center St
(off 3rd Ave.)
Jasper, IN 47546
812/250-5155 | |

Emergency Medical Facilities

Zipmed Urgent Care
695 3rd Ave.

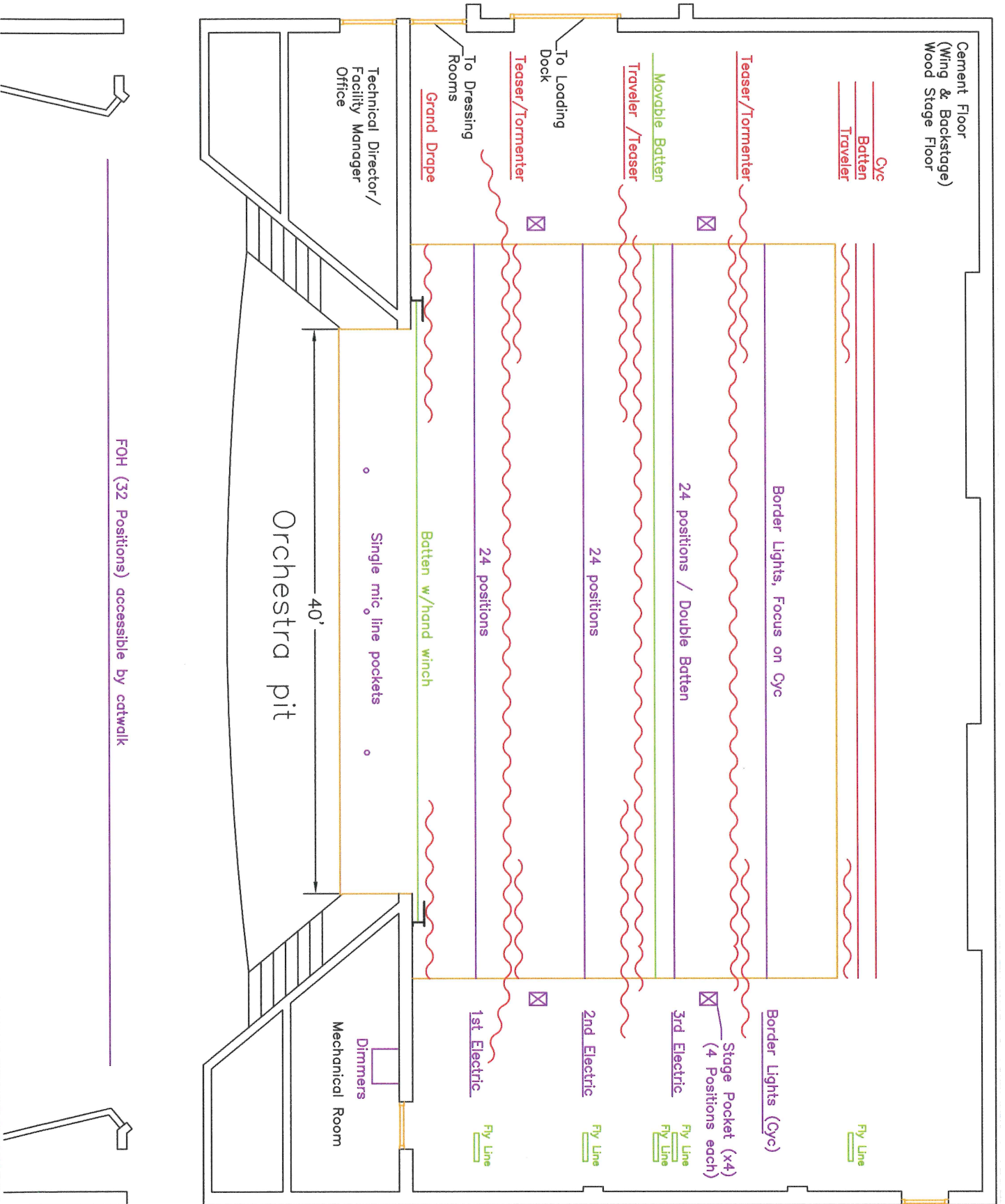
Memorial Hospital & Health Care Center
800 West 9th

Craft & Fabric Stores - in proximity to Jasper Arts Center

JoAnn Fabrics 3703 N Newton (Hwy 231 N)	Wal-Mart 3875 N Newton (Hwy 231 N)
---	--

Building Supplies - in proximity to Jasper Arts Center

- | | |
|---|--|
| (1) Rural King
1920 Lube Way
(off Hwy 231 S) | (3) Home Depot
4250 N Newton
(Hwy 231 N) |
| (2) Krempp Lumber
216 Main Street
(downtown on 3rd Ave) | |



Cement Floor
(Wing & Backstage)
Wood Stage Floor

Eye
Batten
Traveler

Teaser/Tormenter

Movable Batten

Traveler/Teaser

To Loading
Dock

Teaser/Tormenter

To Dressing
Rooms

Grand Drape

Technical Director/
Facility Manager
Office

Orchestra pit

40'

Single mic line pockets

Batten w/hand winch

Border Lights, Focus on Eye

24 positions / Double Batten

24 positions

24 positions

Border Lights (Eye)

Stage Pocket (x4)
(4 Positions each)

3rd Electric

Fly Line

2nd Electric

Fly Line

1st Electric

Fly Line

Dimmers
Mechanical Room

FOH (32 Positions) accessible by catwalk

Cement Floor
(Wing & Backstage)
Wood Stage Floor

Cyc
Batten
Traveler

Teaser/Tormenter

Traveler /Teaser

To Loading
Dock
Teaser/Tormenter

To Dressing
Rooms
Grand Drape

Technical Director/
Facility Manager
Office

52'

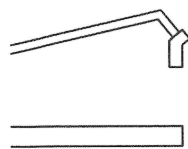
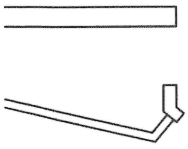
30'

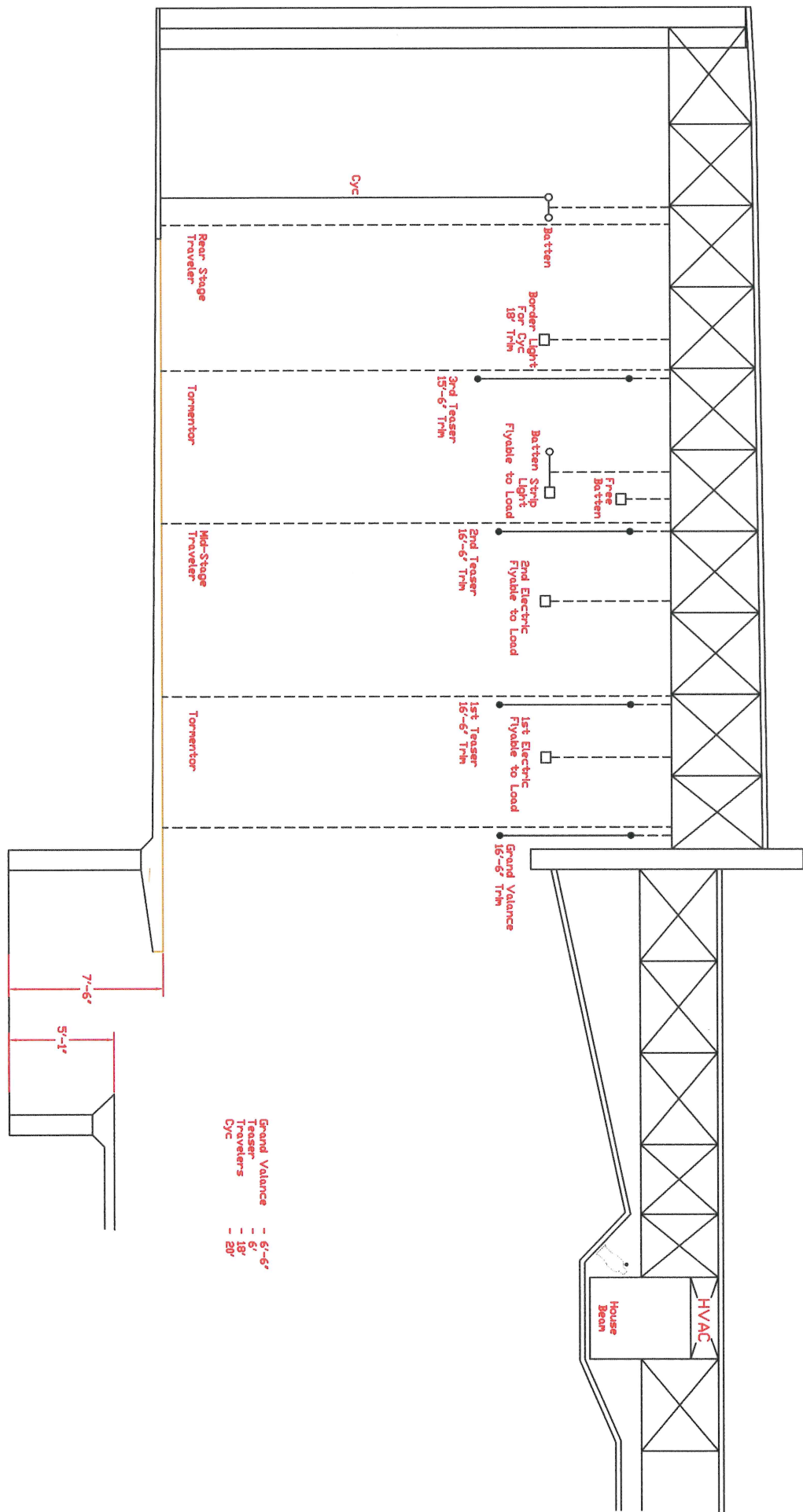
5'

40'

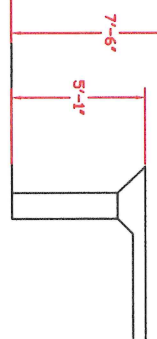
Orchestra pit

Mechanical Room





- Grand Valance - 6'-6"
- Teaser - 6'
- Travelers - 18'
- Cyc - 20'



Jasper Arts Center

General Light Plot

Key	
	26 degree Source 4 Jr
	36 degree Source 4 Jr
	6" Altman Fresnel
	6" Strand/Cent. Fresnel
	D100 Border Light
	Chauvet Intimidator
	18" Altman Scoop
	40 degree Colortran

